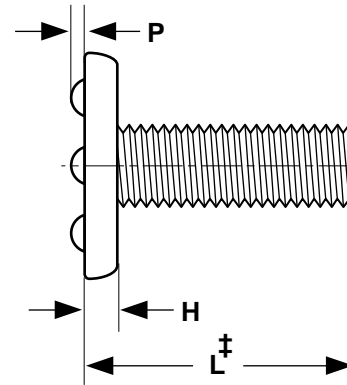
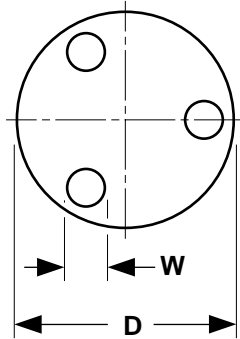


# Weld Screws

# Top Projection Style



‡Length of weld studs is measured from the welding surface of the head to the end of the shank, excluding the projections.

STEEL WELD SCREWS WITH TOP PROJECTIONS										Ohio Nut & Bolt*
Nominal Size or Basic Screw Diameter	Threads per Inch	D		H		P		W		
		Head Diameter		Head Height		Projection Height		Projection Width		
		Max	Min	Max	Min	Max	Min	Max	Min	
6	.138	32	.260	.240	.046	.036	.022	.018	.055	.045
8	.164	32	.323	.303	.052	.042	.027	.023	.075	.065
10	.190	24	.385	.365	.068	.058	.032	.028	.085	.075
10	.190	32	.385	.365	.068	.058	.032	.028	.085	.075
1/4	.250	20	.510	.485	.083	.073	.042	.038	.105	.095
Tolerance on Length					Up to 1 in., Incl.: -0.03					

WELD SCREWS WITH TOP PROJECTIONS - PART NUMBER COMPARISON									
Size	Ohio Nut & Bolt Part Number	Size	Ohio Nut & Bolt Part Number	Size	Ohio Nut & Bolt Part Number	Size	Ohio Nut & Bolt Part Number	Size	Ohio Nut & Bolt Part Number
6-32 x 1/4	GW1104	8-32 x 3/8	GW1406	10-24 x 3/8	GW1506	10-32 x 3/8	GW1606	1/4-20 x 3/8	GW2106
6-32 x 3/8	GW1106	8-32 x 1/2	GW1408	10-24 x 1/2	GW1508	10-32 x 1/2	GW1608	1/4-20 x 1/2	GW2108
6-32 x 1/2	GW1108	8-32 x 5/8	GW1410	10-24 x 5/8	GW1510	10-32 x 5/8	GW1610	1/4-20 x 5/8	GW2110
6-32 x 5/8	GW1110	8-32 x 3/4	GW1412	10-24 x 3/4	GW1512	10-32 x 3/4	GW1612	1/4-20 x 3/4	GW2112
6-32 x 3/4	GW1112	8-32 x 1	GW1416	10-24 x 1	GW1516	10-32 x 1	GW1616	1/4-20 x 1	GW2116
6-32 x 1	GW1116								

<b>Description</b>	A fastener with unified thread pitch and a cylindrical, low profile head with flat parallel surfaces. The top of the head has three hemispheroidal-shaped weld projections equally spaced on a locating circle concentric with the shank.
<b>Applications/ Advantages</b>	Enables a threaded fastener to become a permanent, integral part of an assembly. The top projection style is preferred when a smooth, finished appearance on the outer surface is desired.
<b>Material</b>	C1008 - 1010 or equivalent welding quality carbon steel
<b>Tensile Strength</b>	60,000 psi., minimum
<b>Length of Thread</b>	Studs with nominal lengths of 2 inches or less should have threads extend to within one thread of the top of the weld projections. Studs over 2 inches should have a minimum thread length of 1.75 inches.
<b>Finish</b>	Weld screws are supplied with a plain, unplated finish to facilitate welding.

\*Ohio Nut & Bolt is the original writer of these weld screw specifications.