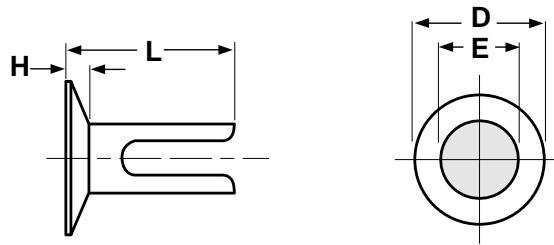


Flat, Counter-sunk Head

Split Rivets

Rivets

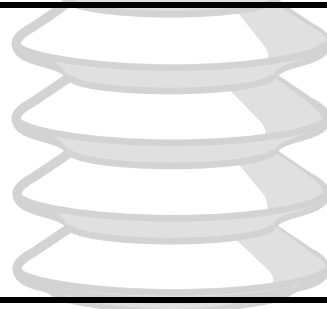


SPLIT RIVETS, FLAT COUNTERSUNK HEAD

ANSI/ASME B18.7

Nominal Size	E		D		H		Tolerance on Length
	Shank Diameter		Head Diameter		Head Thickness		
	Max	Min	Max	Min	Max	Min	
0.125	0.125	0.113	0.223	0.213	0.036	0.026	±0.015
0.152	0.152	0.144	0.317	0.307	0.053	0.043	±0.015
0.152	0.152	0.144	0.380*	0.370*	0.062*	0.052*	±0.015
0.190	0.190	0.180	0.443	0.431	0.061	0.051	±0.015

*Rivets in 0.152 in. size having these head proportions shall be designated "Large Flat Countersunk Head."



Description	A small, countersunk head metal fastener with a split end for clinching by spreading the ends.
Applications/ Advantages	Designed to permanently join soft materials such as rubber, leather, canvas, wood and soft plastics. It eliminates cost of pre-drilling holes while preserving the strength of the assembly by not having material removed from the objects being joined. The rivet is installed with anvils that spread the prongs against the material.
Material	Steel: Low carbon steel (containing 0.1% carbon or less)